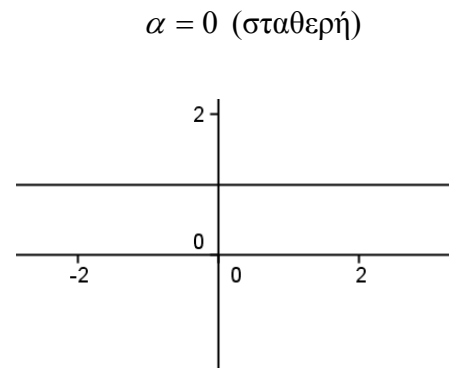
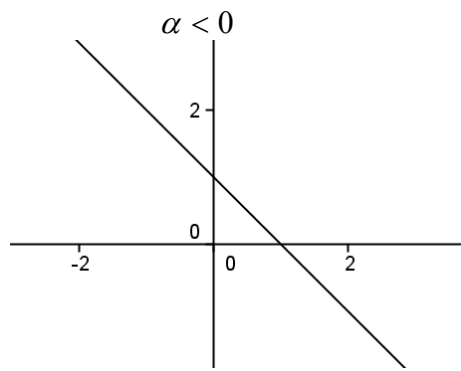
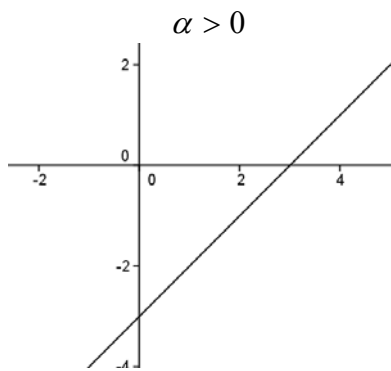
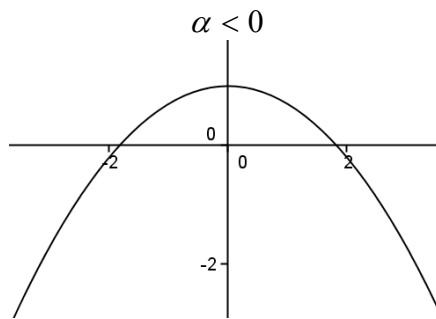
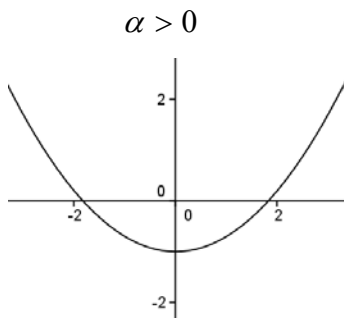


Βασικές Συναρτήσεις

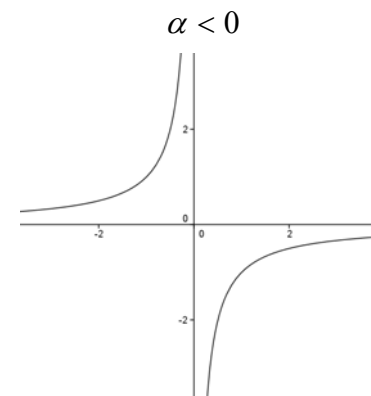
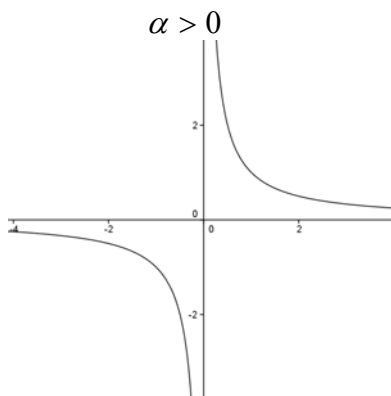
1) Γραμμική $f(x) = \alpha x + \beta$



2) Παραβολή $f(x) = \alpha x^2 + \beta x + \gamma$



3) Υπερβολή $f(x) = \frac{a}{x}$

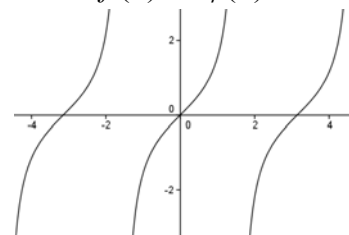
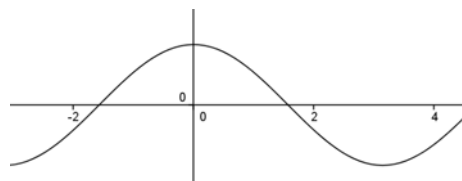
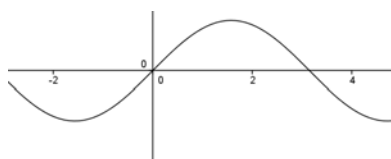


4) Ημίτονο – Σνημίτονο – Εφαπτομένη

$f(x) = \eta\mu(x)$

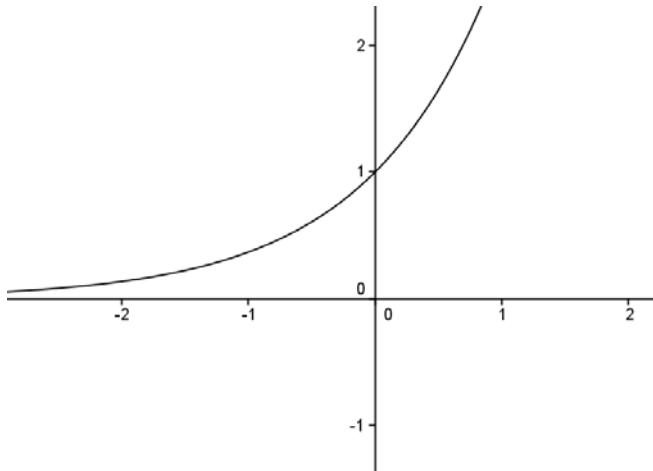
$f(x) = \sigma\upsilon\nu(x)$

$f(x) = \epsilon\phi(x)$

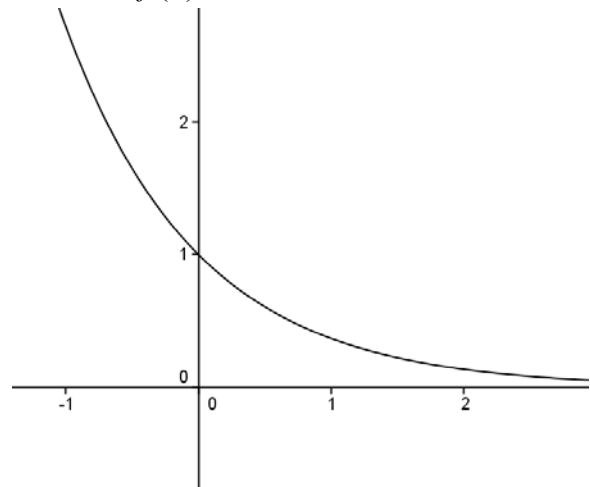


5) Εκθετική Συνάρτηση

$$f(x) = e^x$$



$$f(x) = e^{-x}$$



6) Λογαριθμική Συνάρτηση

$$f(x) = \log(x)$$

